

DETAIL OF KINKED

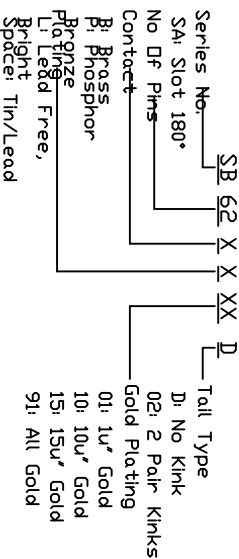
MATERIAL
 INSULATOR: GLASS-REINFORCED THERMOPLASTIC (PBT),
 UL94V-0 RATED.
 CONTACT: COPPER ALLOY.
 PLATING: CONTACT AREA- SELECT GOLD PLATED OVER NICKEL.
 SOLDER AREA- TIN OR TIN/LEAD OVER NICKEL.

ELECTRICAL
 DIELECTRIC WITHSTANDING VOLTAGE: 1,000 VAC RMS.
 CURRENT RATING: 3 AMP.
 INSULATION RESISTANCE: 5,000 MEG. OHMS MIN. AT 500 VDC.
 CONTACT RESISTANCE: 20 MILLI OHMS MAX.

MECHANICAL
 INSERTION FORCE: 340 GRAMS MAX PER CONTACT PAIR.
 WITHDRAWAL FORCE: 28 GRAMS MIN PER CONTACT PAIR.

ENVIRONMENTAL
 TEMPERATURE RANGE: -55° TO +85°.

PART NO.



Amtek Technology Co., Ltd.

TITLE: CARDEDGE SLOT 62 P, 2.54mm PITCH

DWG NO.

REF.	ECN NO.	NAME	DATE

UNLESS OTHERWISE SPECIFIED		
0-10 ±0.2	10-30 ±0.3	
30-100 ±0.4	100-300 ±0.5	
OVER 300 ±0.6	ANGULAR ±0.5°	

UNITS	MM	NAME (INTENDED USE)
MAT'L		PART NO. (INTENDED USE)
FINISH		APPD:
Q'TY		CHKD:
		DR: TERRY 03.20.2002

SCALE	SHEET	REV
2 : 1	1 OF 1	A